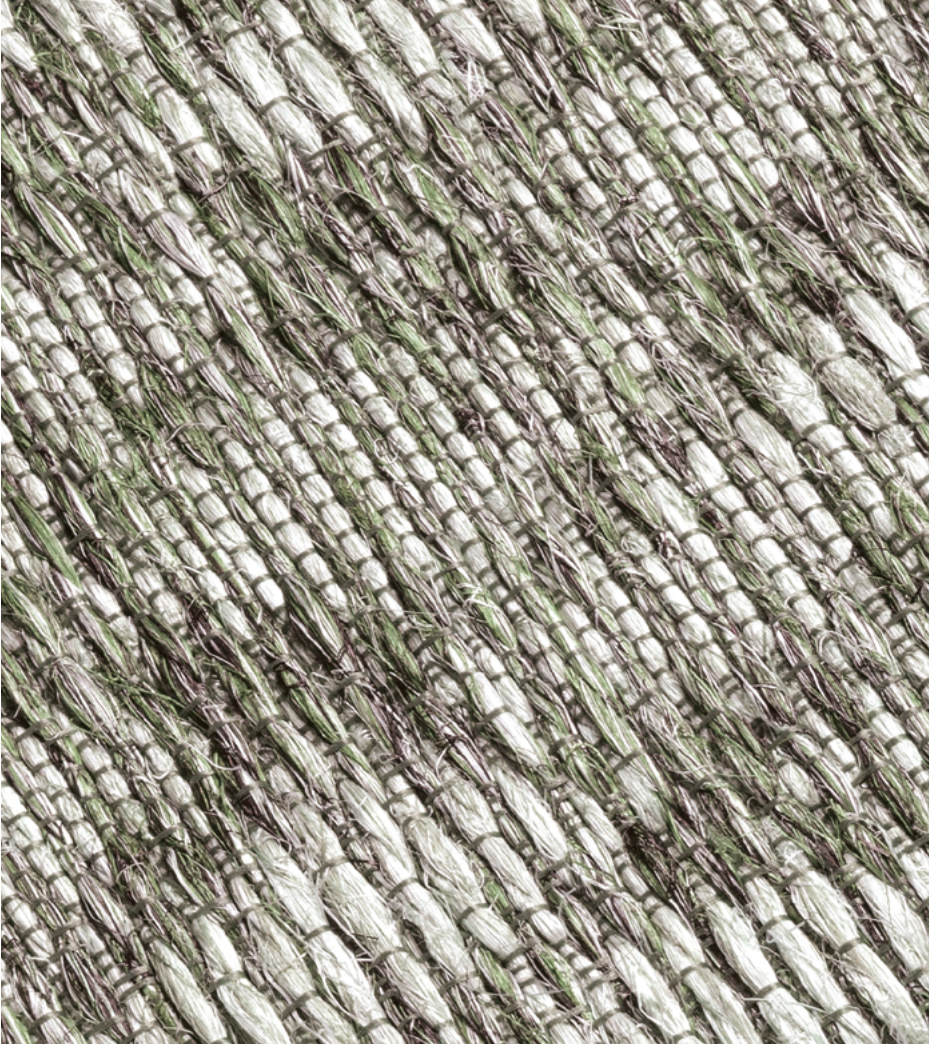




LIMITED EDITION



BAHIA



Inspired by the distinctive landscape of the Sub-Saharan, this flatweave rug brings the naturally occurring geometric patterns that surround us into your home. The leaves of the Agave plant are processed to make a very strong and shiny fiber which is called Sisal. The sisal yarn is woven mechanically into this beautiful design.

TECHNICAL DETAILS

Category:

Essentials

Production Method:

Mechanically woven in Belgium

Composition:

100% sisal from East Africa

Backing:

Latex or anti-slip felt with Lux finish

Wall-to-wall:

Available - head joins should be avoided - minimum 5 cm all around should be added for cutting safety

Custom sizes:

Available up to 3,8 m wide - no seaming

Standard sizes:

185 x 285 cm; 280 x 380 cm; 380 x 480 cm

Total thickness:

7 mm

Total weight:

2.000 kg/m²

Maximum width:

3,8 m

Maximum length:

20 m

Finishing-borders:

Choice between Sideline mini, Lux, Starline or Leather Rodeo Drive. Also available : Galaxy, Glamour, Orbit, Superstrong.

Customization:

Shapes available. See our geometric and organic shapes file in this Mediabank. No special colors possible.

In & outdoor:

Indoor

AVAILABLE COLORS



BH28282 Turtledove



BH13341 Glazed Ginger



BH35281 Cozy Green

ADDITIONAL INFORMATION

To finish this rug we recommend 4 options : a matching serging called Sideline mini, a linen border called Starline, a leather border called Rodeo Drive or our Lux finish. Lux finish gives body to the rug and finishes it with a stylish touch. Both widths are turned under and the lengths are serged with a matching woolen yarn on which an elegant braid is sewn. An anti-slip felt is glued for comfort at the back of the rug. The weight of this finished rug is around 3,5 kilos and the thickness is 14 mm. Other finishings from the catalogue are also possible : Galaxy, Glamour, Orbit, Superstrong.

For the Lux finish keep in mind that the 2 folded sides of the rug will always be in the length of the roll. this means that for the size 2,8 m x 3,8 m the folded sides will be 3,8 m.



Sideline Mini



Starline



Rodeo Drive



Lux finish



Anti-slip felt Lux finish



LIMITED EDITION

le.be



SPECIFICATIONS



Luxury Class:
Luxury class LC1 - not soft



Level of use:
General domestic use



Fire certification:
Reaction to fire - Class Cfl-S1



Slip resistance:
Slip resistant



Electrical Behaviour:
Antistatic floor covering



Thermal Resistance:
Suitable for underfloor heating

ADDITIONAL INFORMATION

The round size in Lux finish is serged all around in a matching woolen yarn and a small elegant braid is sewn on the serging. No edge will be folded but an anti-slip felt is glued on the back. The same goes for all shapes other than rectangular.



CARE ADVICE

We advise you to vacuum your rug once or twice a week so dirt does not penetrate. Use a normal (upright or cylinder) vacuum cleaner without the brush or beater bargaged. In order to avoid regular use marks you should turn your rug around every once in a while.

Sisal is a strong and shiny fiber but it does not like wet stains. If you accidentally spill a liquid on your rug please react quickly. Blot stains immediately with white absorbing paper and if necessary dilute the stain with very little water and blot again with the absorbant paper until it is dry. To clean sisal we recommend the use of dry powders.

If you have any specific question, please feel free to contact us or check out our cleaning partner's website: www.james.eu



LIMITED EDITION
le.be

